

VERTICAL REACTION FORCES AT EACH CORNER (lbs.)		
	STATIC	DYNAMIC
C1,R1	531	±80
C2,R2	531	±80
C3,R3	336	±41
C4,R4	336	±41

FREQUENCY = 4.05 HZ

FOR SHEAR FORCES  
SEE PLAN VIEW  
"FLOOR MOUNTED MACHINES ONLY"

NOTE: THE OPERATING FREQUENCY OF THIS MACHINE MUST BE CONSIDERED IN THE DESIGN OF THE SUPPORTING STRUCTURE.

WHEN INSTALLING CABLE SUSPENDED MACHINES IN OVERHEAD LOCATIONS, ADDITIONAL MEANS OF SUPPORT MUST BE INCORPORATED BY THE CUSTOMER TO PREVENT MACHINE FROM FALLING IN THE EVENT OF CABLE FAILURE.

- BASE ASSY-----141131-D
- DRIVE PLATE-----126061-E
- DRIVE HEAD-----120600-D
- CRANKPIN ASSY-----24418-B
- SLIDE BEARING (2)-----18632-C
- SCREEN BOX ASSY-----126981-S
- BOX FRAME-----105758-E
- BOTTOM PAN-----126980-E
- DRAG LINK-----7700-C
- TOP COVER-----141127-D
- CLAMP HANDLES (8)-----67099-T
- INSPECTION CAP (2)-----7686-D
- BELT GUARD-----121231-E
- DRAG LINK GUARD-----141128-D

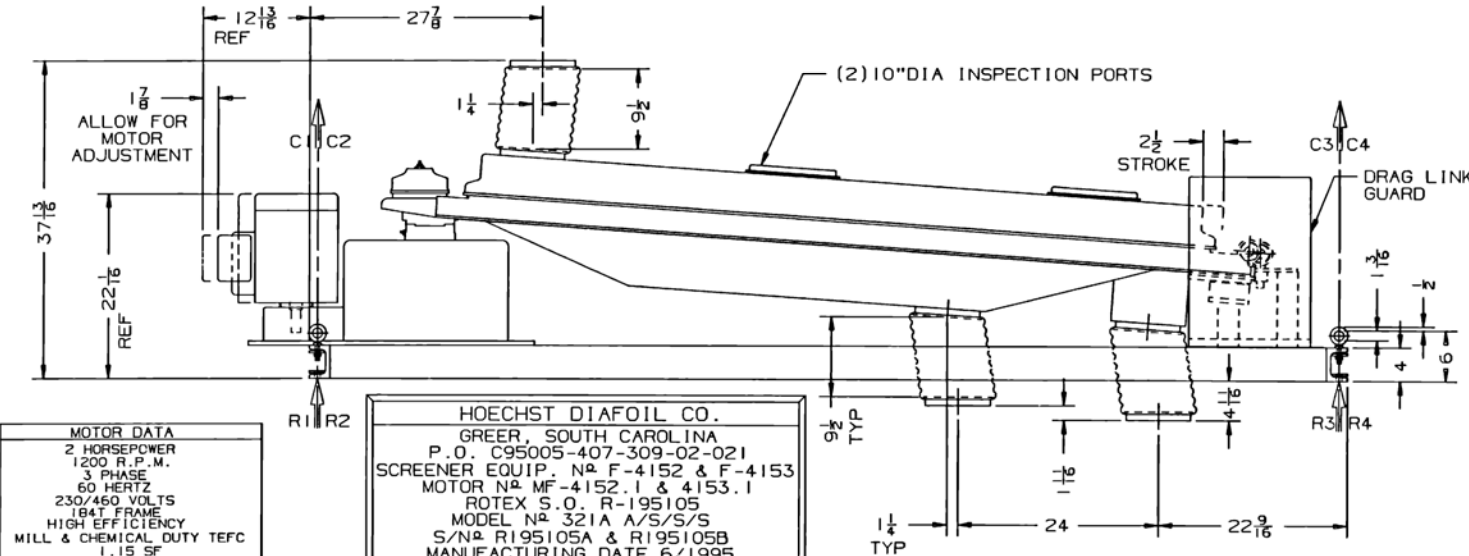
VARIABLE ITEMS NOT UNIQUE TO THIS OUTLINE DRAWING

- BARE SC/FRAME-----304SS 5/8\"/>

- SCREEN DATA ----141130-D
- 16GA-304SS PERF PLATE
- 5/32\"/>

FINAL ASSY HARDWARE

204,210,351,353,356



MOTOR DATA  
2 HORSEPOWER  
1200 R.P.M.  
3 PHASE  
60 HERTZ  
230/460 VOLTS  
184T FRAME  
HIGH EFFICIENCY  
MILL & CHEMICAL DUTY TEFC  
1.15 SF  
CLASS F INSULATION

HOECHST DIAFOIL CO.  
GREER, SOUTH CAROLINA  
P.O. C95005-407-309-02-021  
SCREENER EQUIP. N<sup>o</sup> F-4152 & F-4153  
MOTOR N<sup>o</sup> MF-4152.1 & 4153.1  
ROTEX S.O. R-195105  
MODEL N<sup>o</sup> 321A A/S/S/S  
S/N<sup>o</sup> R195105A & R195105B  
MANUFACTURING DATE 6/1995  
DESIGD FLOW RATE 20,000 PPH

TOLERANCES			
MACHINE		FABRICATION	
FRACTIONAL	± 1/16"	0 - 30 INCHES	± 1/32"
0	± .030	30 - 60 INCHES	± 1/16"
.00	± .018	60 & OVER	± 1/8"
.000	± .005	ANGLES	± 1° - 0'
.0000	± .0005		
ANGLES	± 30'		

NAME OUTLINE DRAWING  
ASSY  
MACHINE ROTEX 321A A/S/S/S  
SUPERSEDES  
SUPERSEDED BY

MATL  
DATE 4/20/95  
SCALE 3/32"=1"  
DR GFB  
REFERENCE DWG 126979

ROTAX INC.  
CINCINNATI, OHIO 45223 U.S.A.  
141126-1

REV	DESCRIPTION	DATE
-----	-------------	------